

# Forest Grove

New for 2019

**WILLERBY**

 40 x 20 - 2 bed

 4 people

 44 x 20 - 2 bed

 4 people

 40 x 20 - 3 bed

 6 people

**The Forest Grove is a grown up holiday lodge with a unique interior designed to suit the lifestyle you love - whether that's enjoying a book in peace in the snug, romantic evenings cuddled up in front of the TV or entertaining guests in the well appointed living space. Two generous bedrooms complete with dressing areas ensure there is a space for everyone - and that you'll never be short of visitors!**

The Forest Grove is available from February 2019 at a starting RRP of £92,995.00 excl. VAT - contact your local Willerby distributor for more information on availability and delivery.



## ★ Standard Features

### Exterior / Structure

- Canexel® cladding ('Midnight Blue' with 'Barnwood' feature panel as standard)
- Energy efficient PVCu white double glazed windows and doors
- Feature front canopy with down lights
- Fully galvanised chassis

### Interior Features

- Gas central heating system featuring high efficiency condensing combi boiler
- Simply Better Build Integritas Wall System™
- Simply Better Build sockets and USB points

### Lounge

- French doors
- Feature bay window with horizontal blinds
- Two-seater sofas and one armchair (40 x 20 2 bed model only)
- Two-seater sofas
- Scatter cushions
- Simply Better Build electric fire
- Two wall mounted TV points (front corner and over mantel)
- Coffee table
- Wall mounted mirror

### Snug (2 bed models only)

- Cashmere sideboard with walnut doors
- Armchair and scatter cushion

### Kitchen

- Integrated CDA single gas oven
- Separate CDA hob with glass splashback, statement cooker hood and extractor fan
- Integrated CDA microwave
- Integrated CDA 70/30 fridge and freezer
- Integrated dishwasher
- Integrated washer/dryer (3 bed models only)
- Breakfast bar with two modern bar stools

### Dining Area

- Feature wall with designer wallpaper
- Window seat with under seat storage (2 bed models only)
- Dining table with faux leather dining chairs
- Pendant lighting

### Utility Room (2 bed models only)

- Worktop with sink
- Integrated washer/dryer
- Extractor fan

### Main bedroom

- Kingsize bed with lift-up storage system
- Bedding pack - Grey
- Bedside tables
- Dressing room with shelving and mirror (2 bed models only)
- Dressing table with stool
- Pendant lighting
- Wall-mounted TV point (bracket not included)

### En-Suite

- Quad shower enclosure with thermostatic shower
- Wash basin with mixer tap mounted on vanity unit
- 'Floating' dual flush WC

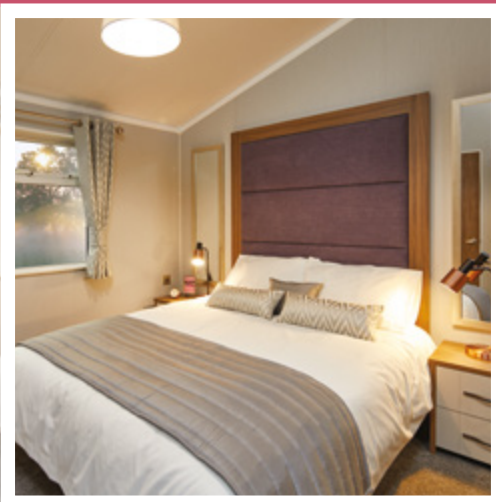
### Twin Bedroom(s)

- 3ft single beds
- Walk in wardrobe with shelving (2 bed models only)
- Bedding pack - Grey
- Bedside table
- Wall-mounted TV point (bracket not included)

### Family Shower Room

- Bath with overhead shower and screen
- Wash basin with mixer tap mounted on vanity unit
- 'Floating' dual flush WC

# Forest Grove



Photography shows the 42 x 20 2 bedroom Forest Grove with optional 'Luxury Pack', graphite windows, instant hot water tap, kingsize double bed in place of twins and residential specification BS 3632 (2015). Specifications and options accurate as of 30th January 2019. Any listed specifications or options are subject to change and are superseded by any subsequent publication. Product photography is intended for illustrative purposes only. Some of the items photographed (such as TV, DVD players, kettle, toaster and ornaments) are accessories used for illustrative purposes only and are not included in purchase. Your delivered holiday home will vary from product photography based on your selected specifications and the availability of materials.

## ☑ Regularly Specified Options

- Forest Exterior Colour Scheme** ('Red Fox' Canexel® with 'Barnwood' feature panel)
- Environmental Exterior Colour Scheme** ('Acadia Green' Canexel® with 'Black' feature panel)
- Graphite doors and windows**
- Outlook French doors to snug**
- Additional matching dining chairs**
- Pull out sofa bed**
- Glazed door between lounge and snug**
- Instant hot water tap to kitchen**
- Shower to replace bath in family shower room**
- Kingsize double bed in place of twins**
- Hot tub ready pack**
- Laminate floor pack** (laminated flooring throughout, excluding bedrooms)
- Artwork pack** (artwork to lounge, snug and hallway)
- Trace heating**
- Simply Better Sleep mattress upgrade pack** (main bedroom only)
- Residential specification BS 3632 (2015)\***
- European specification**

\* Refer to Park Licence and associated planning conditions when selecting Leisure (EN 1647) or Residential BS 3632 (2015) versions of this product.

## 💎 Deluxe Pack

Upgrade to the Deluxe Pack and receive\*:

- ✓ **Velux® skylight to kitchen**
- ✓ **Velux® skylight to snug**
- ✓ **Bluetooth MP3 system**
- ✓ **Rug to lounge**
- ✓ **Floor lamp to lounge**
- ✓ **Footstool in lounge**

## 🌿 Luxury Pack

Includes all items in the Deluxe pack plus:

- ✓ **Spotlights to front canopy**
- ✓ **Floor lamp to snug**
- ✓ **Black ceramic hob**
- ✓ **Electric underfloor heating to family shower room and en-suite**

\*All items available individually at non-discounted rate

## Floorplans

40 x 20 - 2 bedroom



40 x 20 - 3 bedroom



44 x 20 - 2 bedroom



- Bluetooth MP3
- Wardrobe
- Cooker
- TV space
- Dishwasher
- Fridge-freezer
- Microwave
- Washing machine
- Boiler
- Hob

44 x 22 4 bed model available for special order - contact your local Willerby representative for more information